



REGIONAL SPECIALISED METEOROLOGICAL CENTRE-TROPICAL CYCLONES, NEW DELHI SPECIAL TROPICAL WEATHER OUTLOOK

DEMS-RSMC TROPICAL CYCLONES NEW DELHI DATED 11.09.2024

SPECIAL TROPICAL WEATHER OUTLOOK FOR NORTH INDIAN OCEAN (THE BAY OF BENGAL AND THE ARABIAN SEA) VALID FOR NEXT 168 HOURS ISSUED AT 1400 UTC OF 11.09.2024 BASED ON 1200 UTC OF 11.09.2024.

SUB: DEPRESSION OVER NORTHEAST MADHYA PRADESH AND ADJOINING SOUTH UTTAR PRADESH

THE DEPRESSION OVER NORTHEAST MADHYA PRADESH MOVED SLOWLY NEARLY NORTH-NORTHWESTWARDS WITH A SPEED OF 15 KMPH DURING PAST 6 HOURS AND LAY CENTERED AT 1200 UTC OF TODAY, THE 11TH SEPTEMBER OVER NORTHEAST MADHYA PRADESH AND ADJOINING SOUTH UTTAR PRADESH NEAR LATITUDE 25.0°N AND LONGITUDE 79.6°E, ABOUT 30 KM WEST OF KHAJURAHO (42567), 110 KM SOUTH-SOUTHWEST OF HAMIRPUR (42469), 110 KM EAST-SOUTHEAST OF JHANSI (42463) AND 190 KM SOUTHEAST OF GWALIOR (42361).

IT IS LIKELY TO MOVE SLOWLY NORTH-NORTHWESTWARDS DURING NEXT 24 HRS. THE SYSTEM IS UNDER CONTINUOUS SURVEILLANCE OF DOPPLER WEATHER RADAR AT BHOPAL (42667).

AS PER INSAT 3DR IMAGERY AT 1200 UTC, ASSOCIATED SCATTERED TO BROKEN LOW & MEDIUM CLOUDS WITH EMBEDDED INTENSE TO VERY INTENSE CONVECTION LAY OVER UTTAR PRADESH, EAST RAJASTHAN, MADHYA PRADESH AND UTTAR PRADESH WITH MINIMUM CLOUD TOP TEMPERATURE OF -93°C.

ASSOCIATED MAXIMUM SUSTAINED WIND SPEED (MSW) IN ASSOCIATION WITH THE SYSTEM IS 20 KTS GUSTING TO 30 KTS. ESTIMATED CENTRAL PRESSURE IS 994 HPA.

REMARKS:

MADDEN JULIAN OSCILLATION (MJO) INDEX IS CURRENTLY IN PHASE 5 WITH AMPLITUDE LESS THAN 1. IT IS LIKELY TO CONTINUE IN SAME PHASE DURING NEXT 2-3 DAYS. THUS, MJO WOULD SUPPORT ENHANCEMENT OF CONVECTIVE ACTIVITY OVER EAST & CENTRAL INDIA. NCICS BASED GUIDANCE ON EQUATORIAL WAVES INDICATE, STRONG WESTERLY WINDS (5-7 MPS) ALONGWITH ROSSBY WAVES OVER CENTRAL PARTS OF INDIA AND STRONG EASTERLY WINDS (5-7MPS) OVER NORTHERN PARTS OF INDIA DURING NEXT 3-4 DAYS.

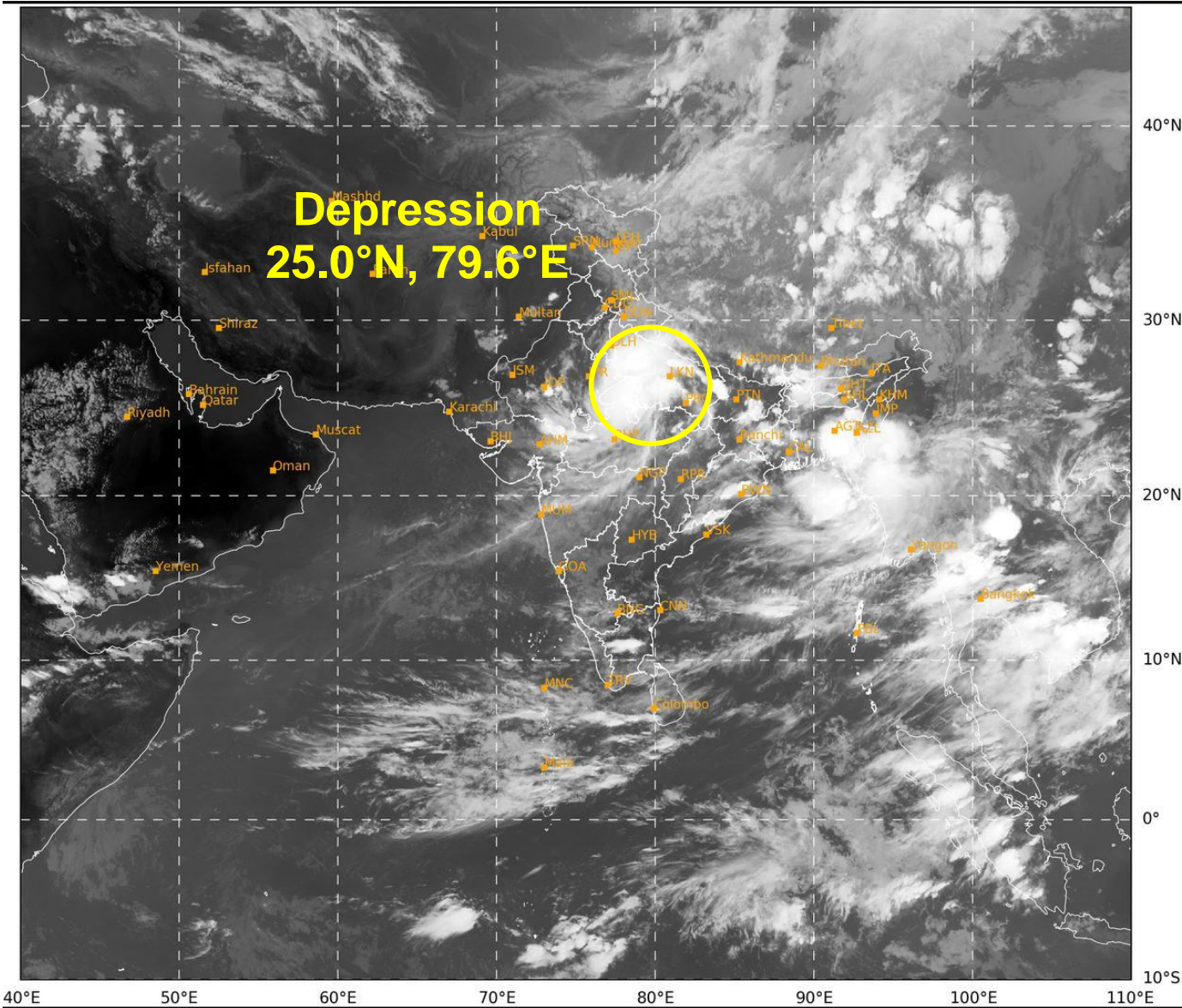
THE LOW LEVEL CONVERGENCE IS AROUND $20 \times 10^{-5} \text{ S}^{-1}$ OVER NORTHEAST OF THE SYSTEM AREA. UPPER LEVEL DIVERGENCE IS AROUND $20 \times 10^{-5} \text{ S}^{-1}$ OVER SYSTEM AREA. THE WIND SHEAR IS MODERATE (10-15 KT) OVER SYSTEM AREA AND HIGH (>20) TO THE NORTH OF SYSTEM AREA. VORTICITY AT 850 HPA LEVEL IS AROUND $150 \times 10^{-5} \text{ S}^{-1}$ OVER SYSTEM AREA WITH VERTICAL EXTENSION UPTO 500 HPA LEVEL. MID LEVEL SHEAR IS CYCLONIC OVER SYSTEM AREA. CURRENT ENVIRONMENTAL CONDITIONS INDICATE THAT THE DEPRESSION OVER NORTHEAST MADHYA PRADESH AND ADJOINING SOUTH UTTAR PRADESH IS LYING IN A MODERATELY FAVOURABLE ENVIRONMENT

MOST OF THE MODELS ARE INDICATING THAT THE SYSTEM WILL MOVE SLOWLY NORTH-NORTHWESTWARDS INITIALLY AND THEREAFTER, IT IS LIKELY TO RECURVE NORTH-NORTHEASTWARDS UNDER THE INFLUENCE OF APPROACHING WESTERLY TROUGH AT 400 HPA LEVEL. IT WOULD ALSO INHIBIT ITS FURTHER NORTHWESTWARDS MOVEMENT. MOST OF THE MODELS ARE INDICATING WEAKENING OF THE SYSTEM AROUND 14TH EVENING

IN VIEW OF ALL THE ABOVE, IT IS INFERRED THAT DEPRESSION OVER NORTHEAST MADHYA PRADESH AND ADJOINING SOUTH UTTAR PRADESH IS LIKELY TO MAINTAIN ITS INTENSITY AND MOVE SLOWLY NORTH-NORTHWESTWARDS DURING NEXT 24 HRS.

NEXT UPDATE IN ASSOCIATION WITH THIS SYSTEM WILL BE ISSUED AT 0300 UTC OF TOMORROW, THE 12TH SEPTEMBER.

(D. R. PATTANAİK)
SC.-F, RSMC NEW DELHI



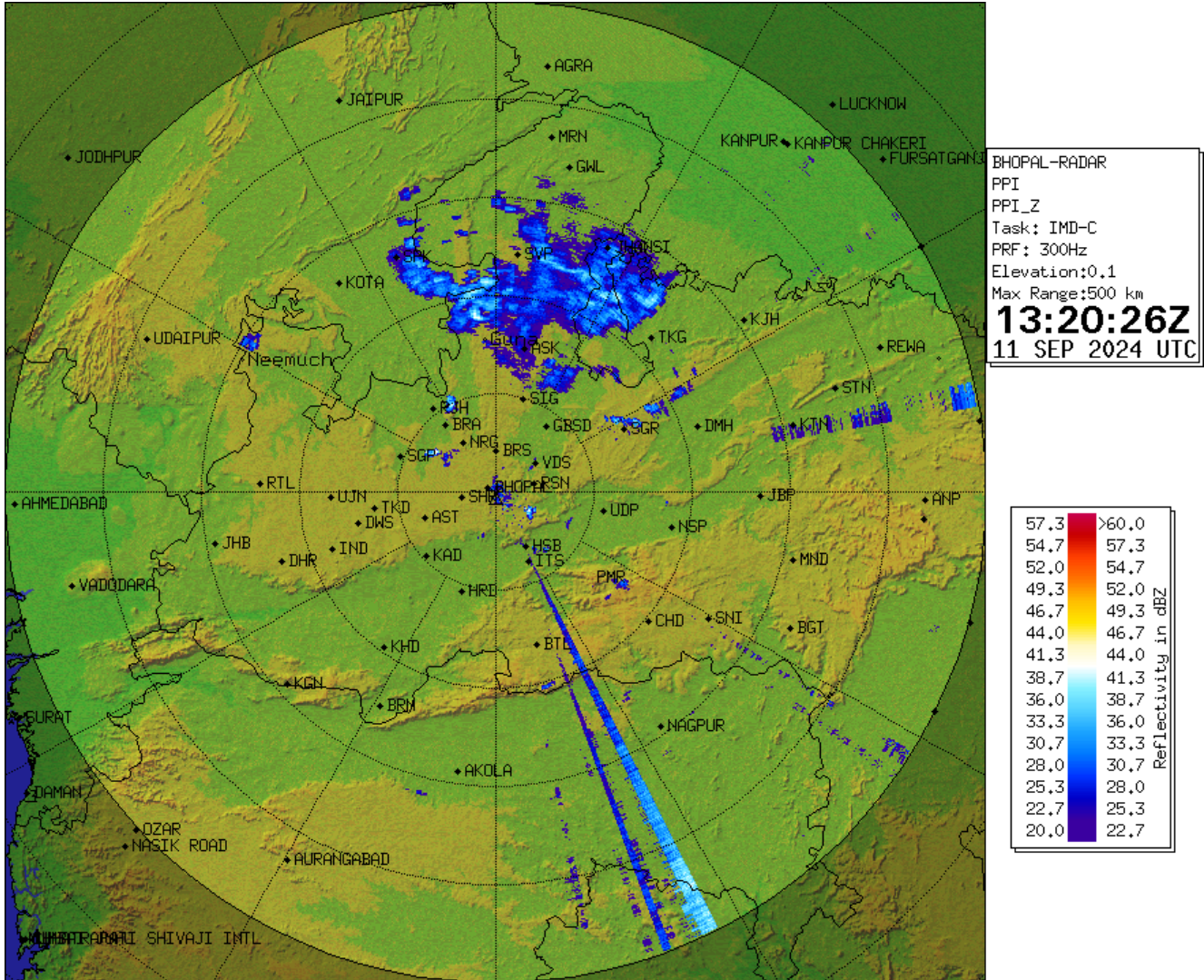
350

948

IMD, DELHI

Cloud distribution: (a) Isolated: <25%, Scattered:25-50%, Broken: 51-75%, Solid:>75%, Convection Intensity: (a) Weak: Cloud Top Temperature (CTT) >-25°C, (b) Moderate: CTT: - 25°C to -40°C, (c) Intense: CTT: - 41°C to -70°C and (d) Very Intense: : Less than -70°C
PROBABILITY OF CYCLOGENESIS (FORMATION OF DEPRESSION):NIL: 0%, LOW: 1-33%, , MODERATE: 34-66% AND HIGH: 67-100%
This is a guidance Bulletin for WMO/ESCAP Panel Member countries. Visit respective National websites for Country specific Bulletins

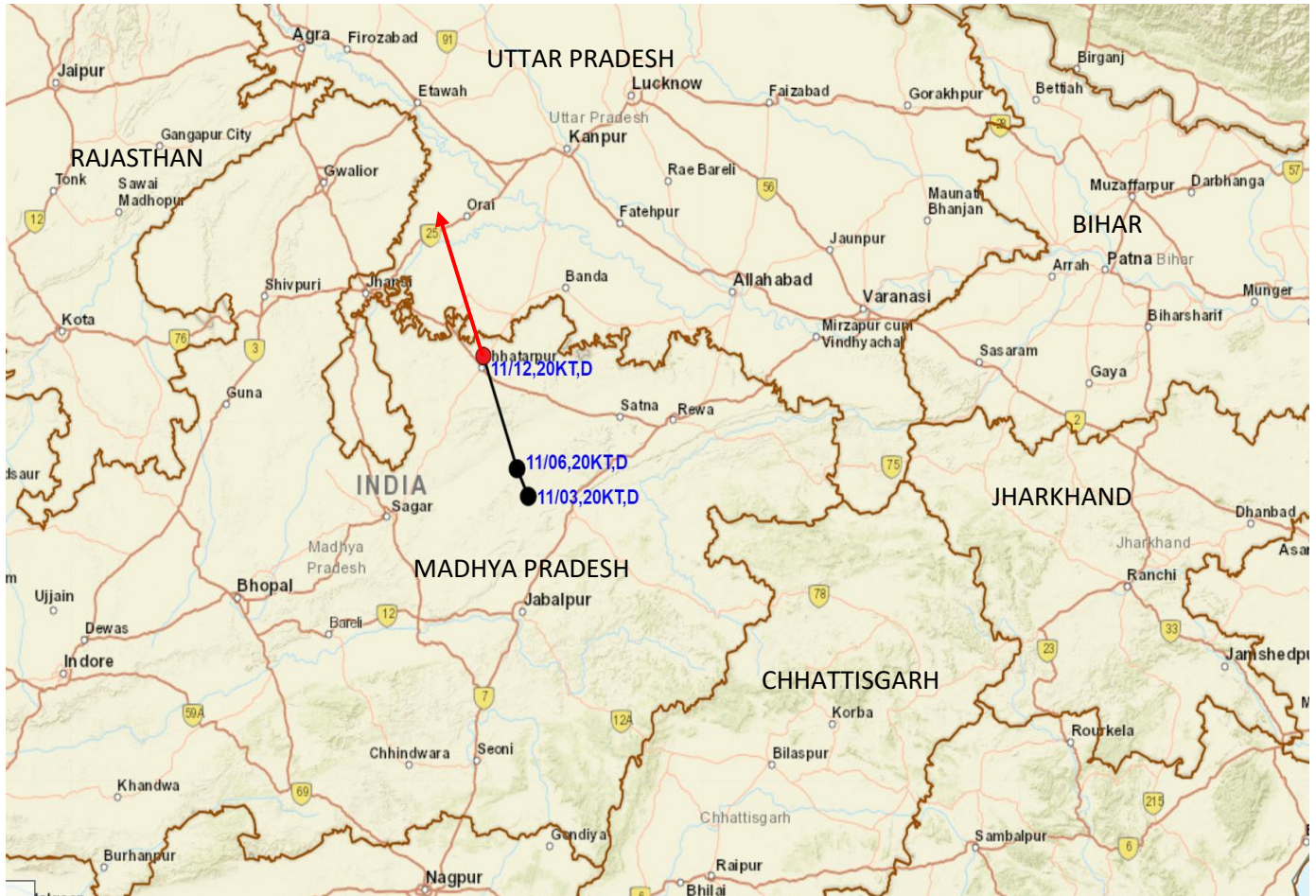
Doppler Weather Radar at Bhopal PPI(Z)



Cloud distribution: (a) Isolated: <25%, Scattered:25-50%, Broken: 51-75%, Solid:>75%, Convection Intensity: (a) Weak: Cloud Top Temperature (CTT) >-25°C, (b) Moderate: CTT: - 25°C to -40°C, (c) Intense: CTT: - 41°C to -70°C and (d) Very Intense: : Less than -70°C
 PROBABILITY OF CYCLOGENESIS (FORMATION OF DEPRESSION):NIL: 0%, LOW: 1-33%, , MODERATE: 34-66% AND HIGH: 67-100%
 This is a guidance Bulletin for WMO/ESCAP Panel Member countries. Visit respective National websites for Country specific Bulletins



OBSERVED AND FORECAST TRACK OF DEPRESSION OVER NORTHEAST MADHYA PRADESH AND ADJOINING SOUTH UTTAR PRADESH BASED ON 1200 UTC (1730 IST) OF 11TH SEPTEMBER, 2024

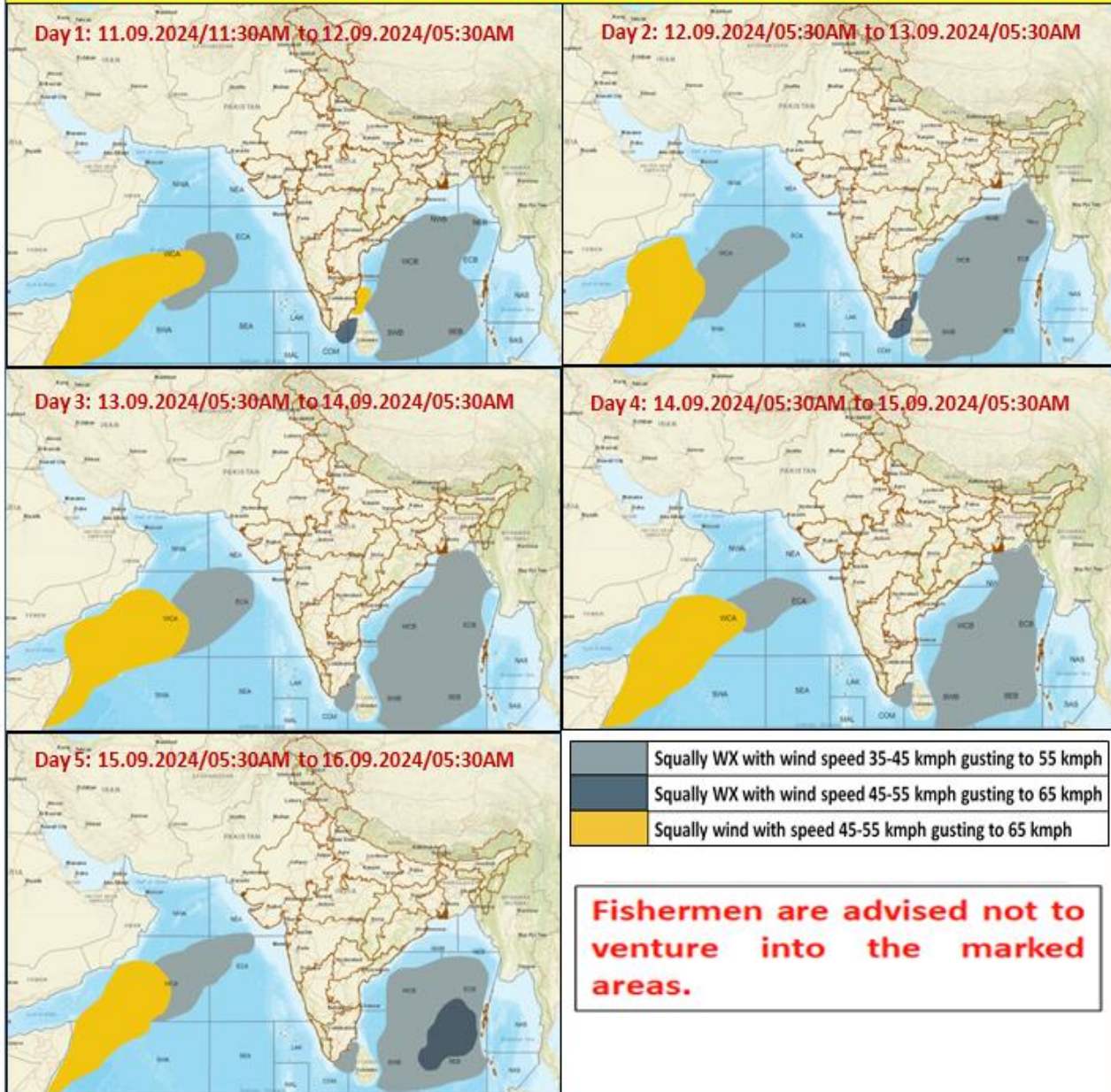


DATE/TIME IN UTC
 IST=UTC + 0530
 L: LOW PRESSURE AREA
 WML: WELL MARKED LOW PRESSURE AREA
 D: DEPRESSION (17-27 KT)
 DD: DEEP DEPRESSION (28-33 KT)
 CS: CYCLONIC STORM (34-47 KT)
 SCS: SEVERE CYCLONIC STORM (48-63KT)
 VSCS: VERY SEVERE CYCLONIC STORM (64-89 KT)
 ESCS: EXTREMELY SEVERE CYCLONIC STORM (90-119 KT)
 SuCS: SUPER CYCLONIC STORM (≥ 120 KT)

- LESS THAN 34 KT
- 34-47 KT
- ≥ 48 KT
- OBSERVED TRACK
- FORECAST TRACK
- CONE OF UNCERTAINTY

Cloud distribution: (a) Isolated: <25%, Scattered:25-50%, Broken: 51-75%, Solid:>75%, Convection Intensity: (a) Weak: Cloud Top Temperature (CTT) >-25°C, (b) Moderate: CTT: - 25°C to -40°C, (c) Intense: CTT: - 41°C to -70°C and (d) Very Intense: : Less than -70°C
 PROBABILITY OF CYCLOGENESIS (FORMATION OF DEPRESSION):NIL: 0%, LOW: 1-33%, , MODERATE: 34-66% AND HIGH: 67-100%
 This is a guidance Bulletin for WMO/ESCAP Panel Member countries. Visit respective National websites for Country specific Bulletins

Fishermen Warning Graphics



Cloud distribution: (a) Isolated: <25%, Scattered:25-50%, Broken: 51-75%, Solid:>75%, Convection Intensity: (a) Weak: Cloud Top Temperature (CTT) >-25°C, (b) Moderate: CTT: - 25°C to -40°C, (c) Intense: CTT: - 41°C to -70°C and (d) Very Intense: : Less than -70°C
 PROBABILITY OF CYCLOGENESIS (FORMATION OF DEPRESSION):NIL: 0%, LOW: 1-33%, , MODERATE: 34-66% AND HIGH: 67-100%
 This is a guidance Bulletin for WMO/ESCAP Panel Member countries. Visit respective National websites for Country specific Bulletins